



CITY OF ATLANTA

ON-STREET DINING DESIGN STANDARDS

Released
December 2020



WHAT IS ON-STREET DINING?

On-street dining provides an opportunity for food and drinking establishments to expand their service to outdoor parking spaces immediately outside their places of business. This process is applicable to dining in the public right-of-way only and does not include private or state-owned streets.



WHY IS IT IMPORTANT?

This allows restaurants to appropriately provide safe areas for patrons to socially distance while adding character to the streetscape and encouraging pedestrian activity.



WHERE IS IT PERMITTED?

On-street dining parklets may be permitted on streets that meet the following criteria:

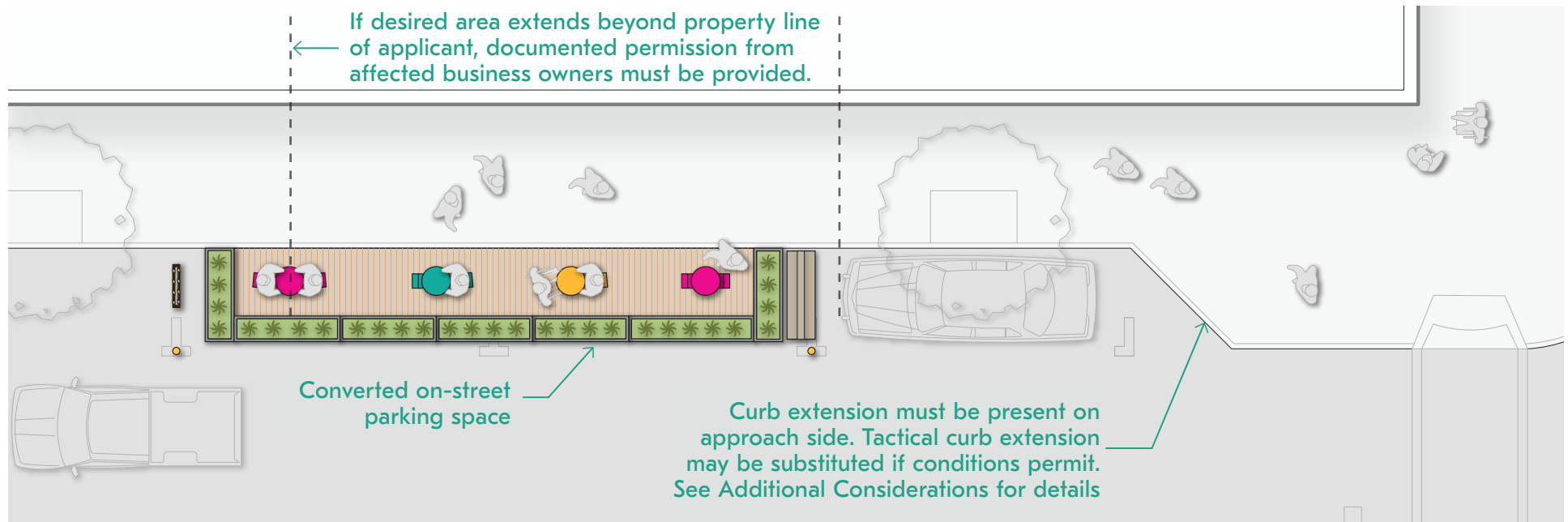
- On-street parking (on one or both sides)
- City owned right-of-way (see [map](#))
- Local or collector street* (see [map](#))

*Arterial streets considered on a case-by-case basis
(see Additional Considerations)

On-street dining parklets **WILL NOT** be permitted if the space is:

- Within 100 ft of a MARTA bus stop
- Within 15 ft of a fire hydrant
- Within 20 ft of a crosswalk and/or 30 ft of a stop sign

EXISTING STREET CONDITIONS



ON-STREET DINING GENERAL REQUIREMENTS

CHECKLIST

On-street dining spaces must meet all of the following criteria:

General

- ADA compliant platform flush with accessible sidewalk
- Vertical barriers along outside edge of parklet area
- Lighting sufficient for nighttime operations visibility
- Curb extension present on the approach side of the street
(see Additional Considerations)

Dimensions

- 7.5' minimum parking lane width
- 20' minimum, 44' maximum parklet area length
- 4' space between parklet amenities & adjacent parking spaces
- Vertical barriers set 1' inside parking lane

Vertical Barriers

- 36" min. height, 42" max. height
- Reflective bands on barriers at corners and short ends
- Create a visually solid edge along outside area of parklet

Acceptable barriers include:

- Planters
- Railing
- Half wall
- Traffic barriers (water-filled or concrete)

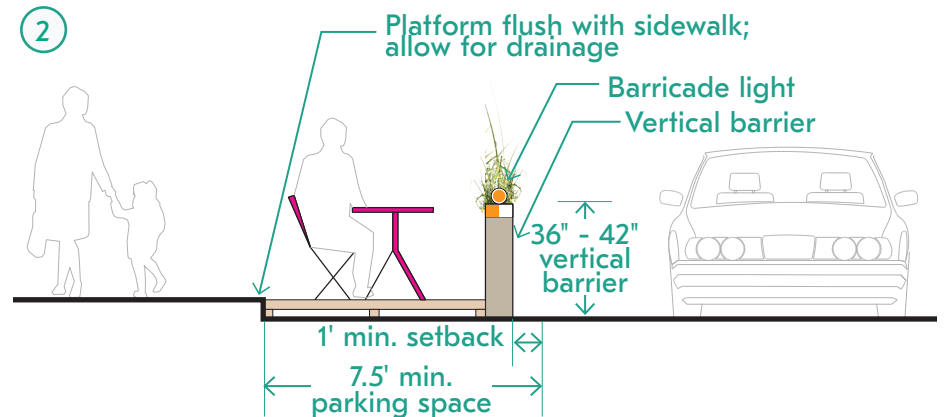
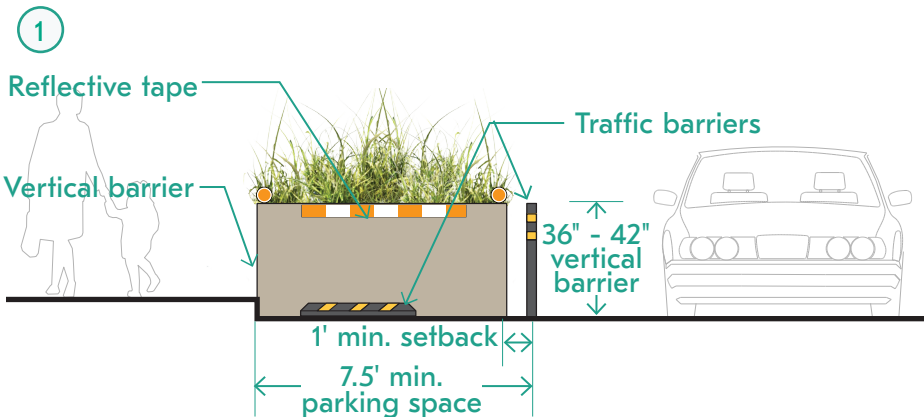
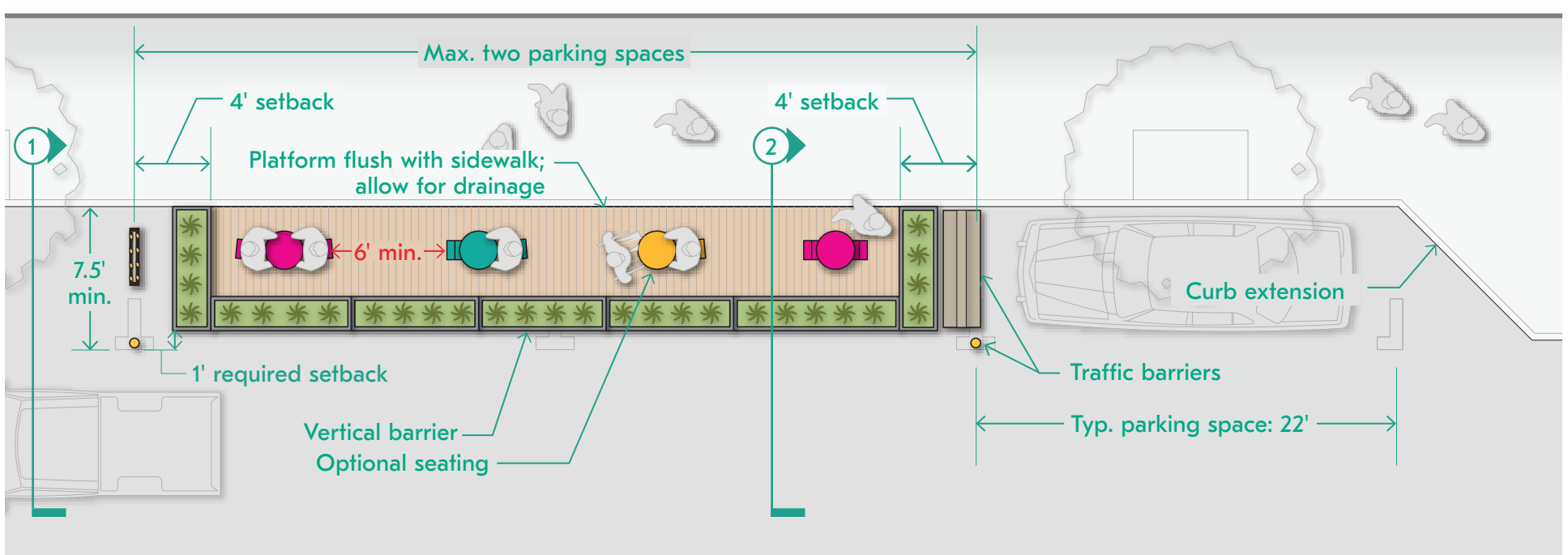
OPTIONAL ENHANCEMENTS

The following enhancements are permissible, but not required:

- Furnishing & amenities
- Decorative lighting

DETAIL

Below is a visual representation of the requirements and enhancements:



ON-STREET DINING ADDITIONAL CONSIDERATIONS

PUBLICLY METERED PARKING SPACE UTILIZATION

Generally, the cost associated with usage of publicly metered parking spaces for purposes other than hourly personal vehicle parking is \$17 per space per day. The City of Atlanta Parking will consider waiving these fees for the purpose of on-street dining spaces, however, there may be some locations that are considered high demand and fees may be incurred for the use of those spaces. This matter will be reviewed on a case by case basis per each on-street dining application. These fees will not be incurred for any space that is not metered.

INSURANCE AND INDEMNIFICATION

- All right-of-way dining area permit holders shall maintain liability insurance with the City as the certificate holder in the amounts determined by the Office of Risk Management.
- All right-of-way dining area permit holders shall indemnify and hold harmless the City of Atlanta, its officers and employees from any claims for damages to property or injury to persons which may be occasioned by any activity carried on under the terms of the permit.

ROADWAY CONDITIONS

- On-street dining spaces may be considered on certain City-owned arterial streets that are posted no higher than 35 mph and will be reviewed on a case by case basis
- Safety is our number one priority, so certain road conditions may require additional safety measures, such as concrete traffic barricades. This will be determined by ATLDOT on a case by case basis and will factor certain conditions, such as street width, number of lanes, vehicle volumes and operational speed.

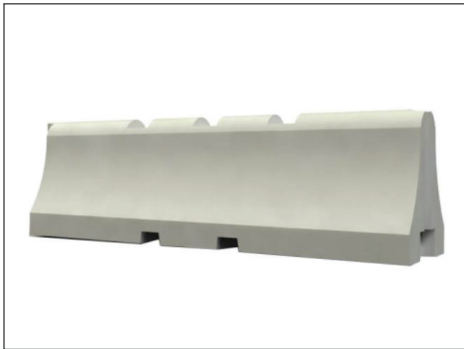
CURB EXTENSION REQUIREMENT

Permanent or tactical curb extension must be present on approach side of on-street dining area (see Tactical Curb Extension Diagrams)

ON-STREET DINING MATERIALS LIST

Below are examples of materials that can be used to construct a parklet:

TRAFFIC CONTROL

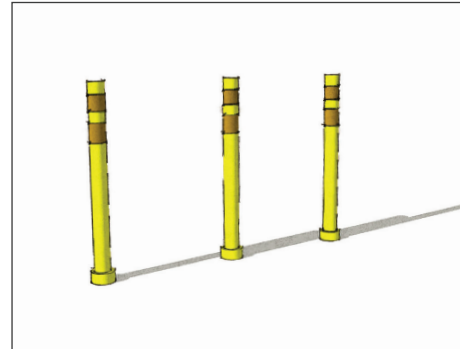


Concrete Security Barrier

Typical Dimensions:

48"L x 24"W x 36"H

Estimated Cost: \$300 ea.



Flex Posts

Typical Dimensions:

3" DIA x 36"H

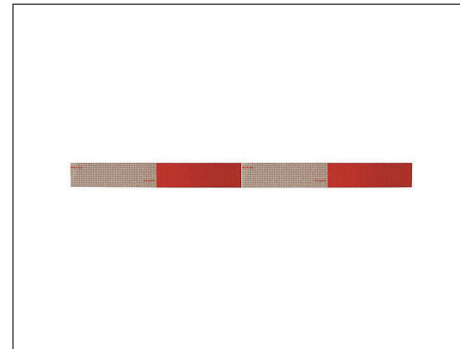
Estimated Cost: \$40 ea.



Wheel Stop

Typical Dimensions: 3'L x 6"W x 4"H

Estimated Cost: \$50 ea.



Reflective Tape Strip

Typical Dimensions:

2'L x 2"W

Estimated Cost: \$3 ea.



Striping Machine

Typical Dimensions: 15 lbs., 32"L

Estimated Cost: \$200 ea.



Retroreflective Striping (typical)

Typical Dimensions: 4"W

Estimated Cost: \$3/LF



Inverted Striping Paint Cans

Typical Dimensions:

18oz spray can, white

Estimated Cost: \$12/can



Cone Light

Typical Dimensions:

3.5"L x 1.75"W x 2"H

Estimated Cost: \$15 ea.

BASE

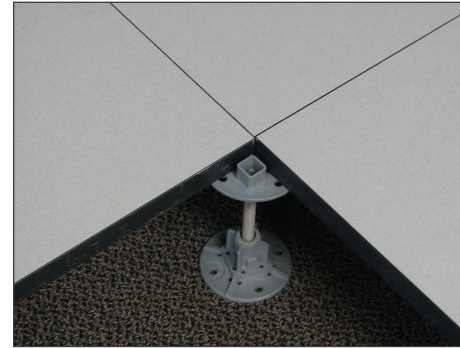


Wood Pallet

Typical Dimensions:

48"L x 40"W x 10"H

Estimated Cost: \$30 ea.



Paver & Pedestal System

Typical Dimensions:

Paver: 2'L x 2'W

Pedestal: 5" base DIA 11.5" H max.

Estimated Cost: \$10/sf



Wood Framing (2x4 Lumber)

Typical Dimensions:

12' L x 4"W x 2"H

Estimated Cost: \$10 ea

FLOOR



Wood Decking Panels

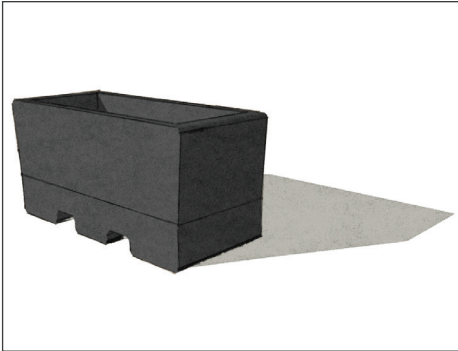
(Strand Board)

Typical Dimensions:

8'L x 4'W x 1/2"

Estimated Cost: \$25 ea.

BARRIER WALL



Planter

Typical Dimensions:

48"L x 20"W x 23"H

Estimated Cost: \$400



Railing

Typical Dimensions:

2"x4" lumber, 36" H constructed

Estimated Cost: \$150

FURNISHINGS



Tables & chairs

Typical Dimensions:

Table: 24" DIA x 29" H

Chair: 17"L x 2'W x 32" H

Estimated Cost:

Table: \$220 ea.

Chair: \$95 ea.



Umbrella

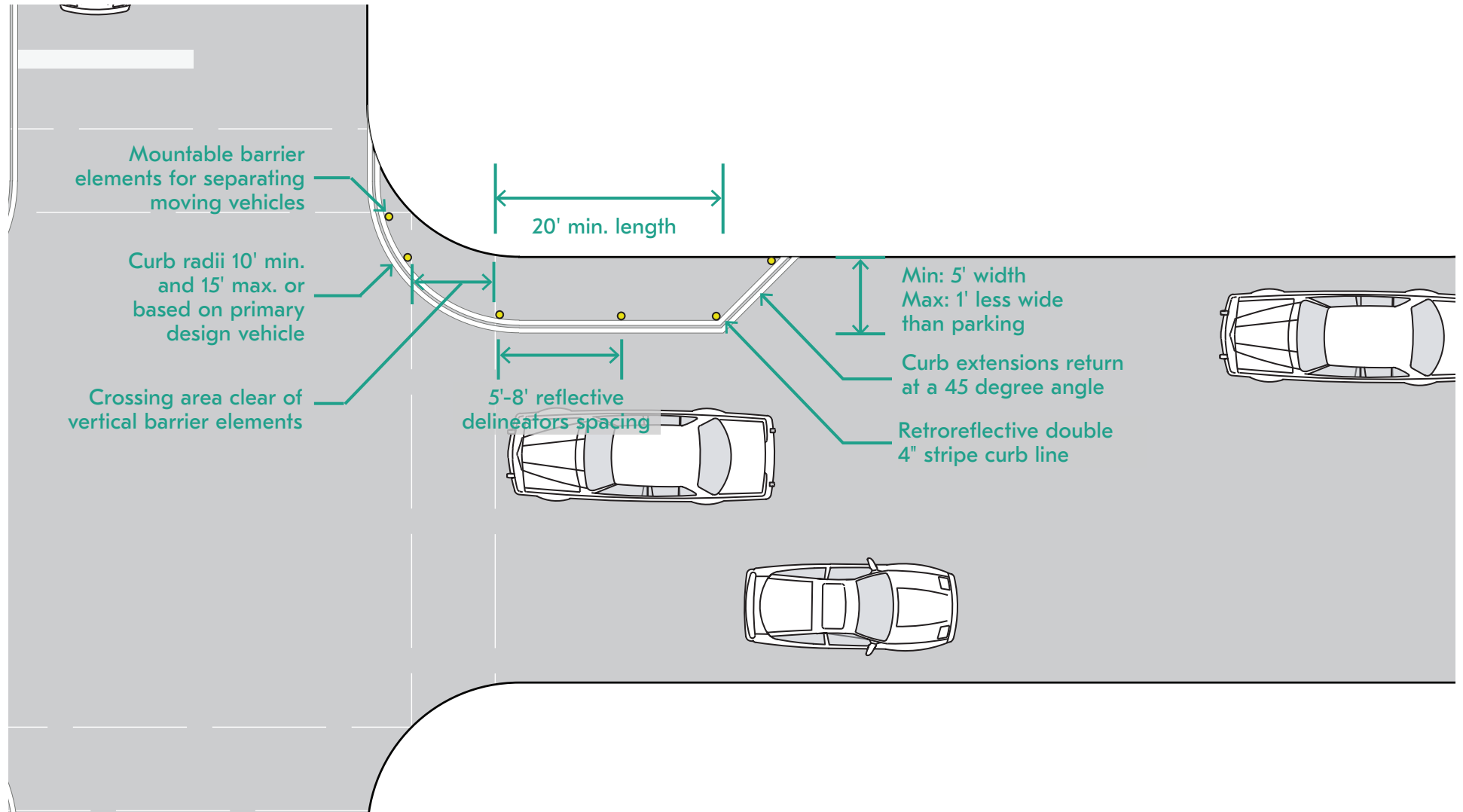
Typical Dimensions: ~8'H

Estimated Cost: varies

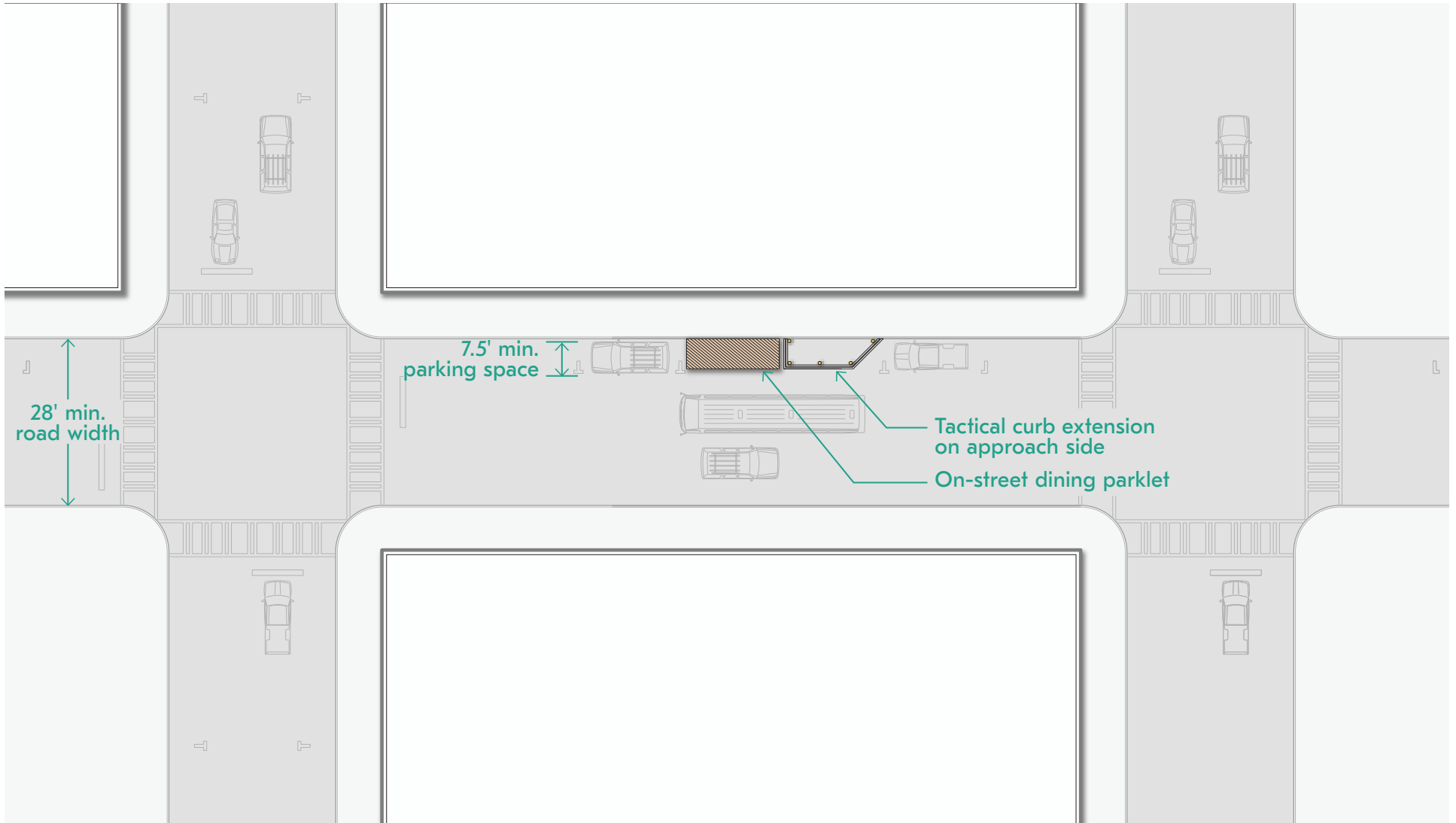
ON-STREET DINING TACTICAL CURB EXTENSION

The following diagrams are intended to outline conditions that may be needed on streets without permanent curb extensions. Tactical curb extensions will not be applicable to multi-lane high, volume streets. These will be evaluated on a case by case basis.

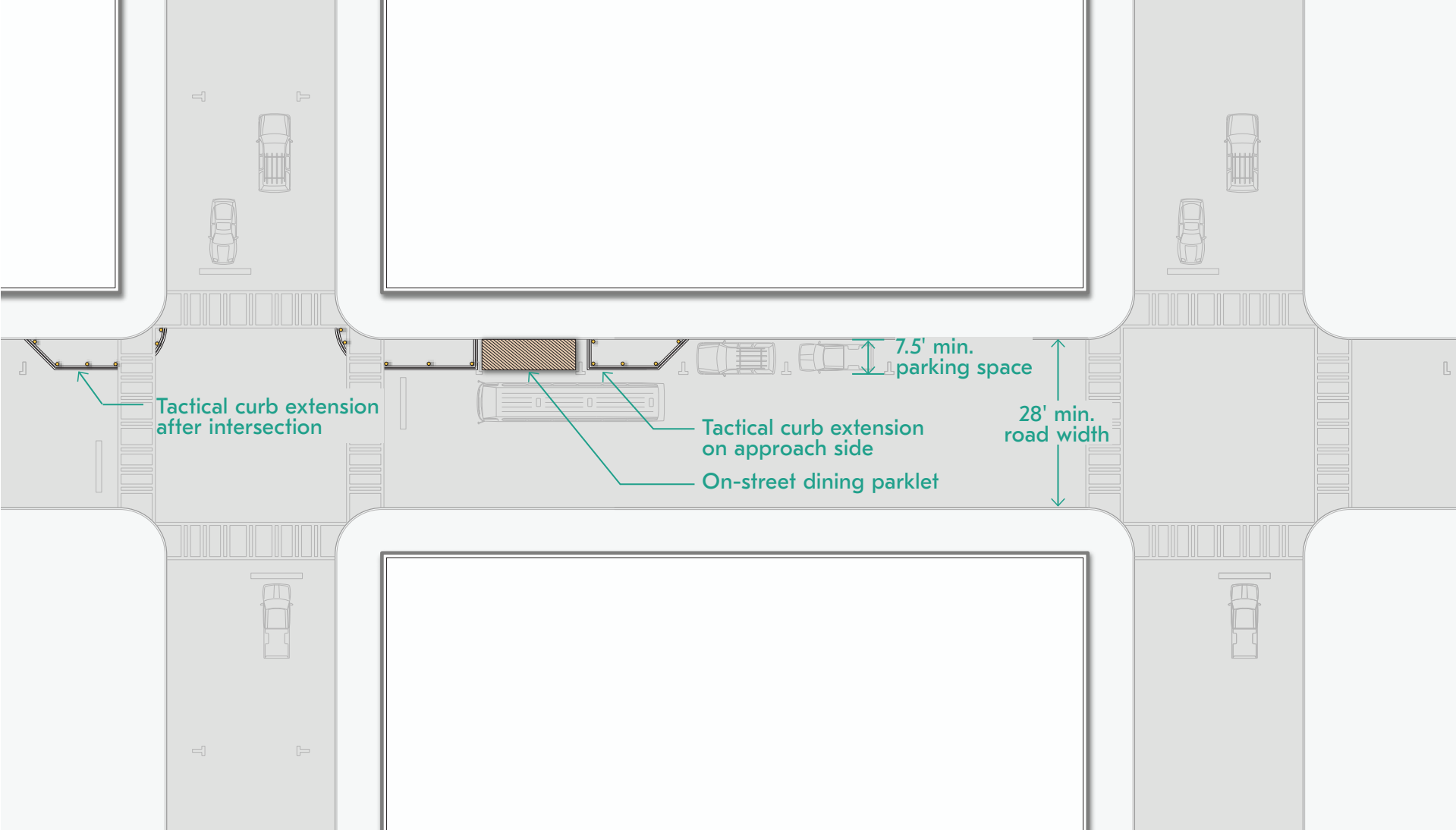
DETAIL



MID-BLOCK



NEAR SIDE



FAR SIDE

