



## 25 MPH Speed Limit- Frequently Asked Questions

### When will the speed limit changes to 25 MPH take effect?

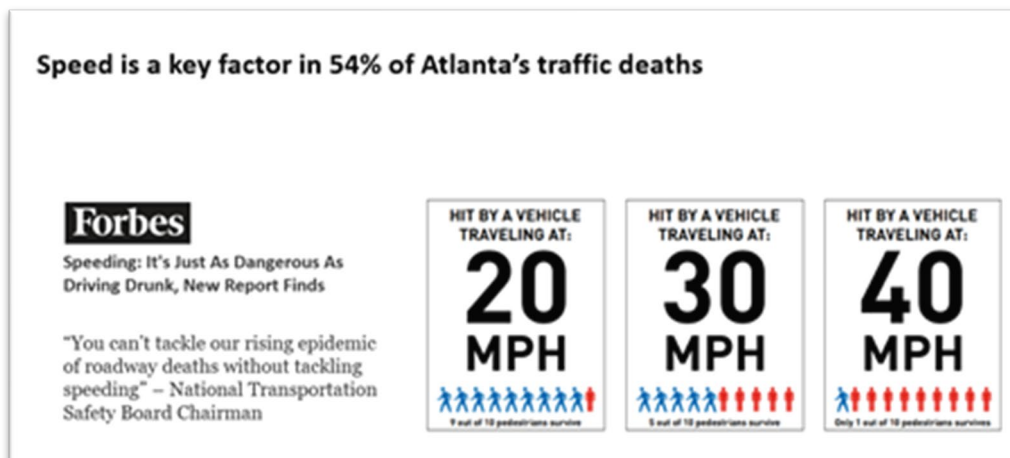
The new default speed limit in the City of Atlanta became effective on April 20, 2020, as a part of the Vision Zero Ordinance. However, the City will begin changing the speed limit signs on applicable streets starting July 1, 2020.

### Which Streets are affected by the new 25 MPH speed limit?

The new default 25 MPH speed limit will affect all city-owned local, collector and downtown arterial streets that are not included on the Georgia Department of Transportation's (GDOT) Radar speed enforcement list. State-owned (GDOT) streets, outlying (non-downtown) arterial streets, and other collector streets that are on the laser list are not included. A map of these streets will be available soon.

### Why is the speed limit changing to 25 MPH?

The City of Atlanta is implementing a default 25 MPH speed limit to make city streets safer for all users, especially pedestrians and bicyclists. The city's Vision Zero initiative aims to reduce crashes on city streets and eliminate serious injuries and fatal crashes. National data shows that driving at or below 25 MPH improves driver reaction to unexpected circumstances and more likely to be able to avoid a crash. Additionally, pedestrians that are struck by vehicles travelling at slower speeds have significantly higher chances of survival.





## 25 MPH Speed Limit- Frequently Asked Questions

### **What is being done to increase awareness around the lower speed limits?**

The city will utilize numerous platforms to engage and inform the public about Vision Zero and the 25 MPH speed limits, including social media, city websites, email blasts, robocalls, and partnerships with other organizations and city agencies.

### **What is the fine for speeding?**

The fine amounts for speeding violations are not changing through this Vision Zero ordinance and speed limit change. The current fine for a speeding violation ranges from \$150-\$730, depending on how many miles per hour over the speed limit the driver is going. Fines may also be higher for drivers who have had previous speeding violations.

### **Will lowering speed limits cause more traffic congestion?**

No. Congestion is primarily a result of single occupancy commuting, vehicle crashes, double-parked vehicles, or lane blocking. A 25 MPH speed limit will mostly impact those drivers travelling at excessive, unsafe speeds. Most importantly, the 25 MPH speed limit will save lives.

### **How many signs will be posted?**

The city will replace between 900 and 1000 speed limit signs throughout the city and will also increase the frequency of these signs.

### **Will there be an increase in enforcement now?**

Partnerships with local law enforcement will be critical to the success of Vision Zero. The Vision Zero program supports high visibility enforcement of behaviors that lead to serious injuries and fatal crashes, such as speeding, impaired or distracted driving, and other failure to obey traffic control device violations. The City of Atlanta has on-going interest in automated enforcement, such as speed and red-light cameras. Numerous city entities will be collaborating to bring this technology to the city.

