



Joseph E. Lowery Blvd. Corridor Improvements Project Phase 1

from Mitchell St. to Joseph E. Boone Blvd.

Public Information Meeting
January 19, 2017

Public Information Meeting Agenda

- ▶ 6:00 pm-6:15 pm Welcome and Introductions
- ▶ 6:15 pm-6:30 pm Project Overview Presentation
- ▶ 6:30 pm-7:30 pm Open House / Public Input
- ▶ 7:30 pm-8:00 pm Questions and Answers

Project Overview

- ▶ Share information about:
 - ▶ Previous Plans and Studies Considered
 - ▶ Corridor Crash Data
 - ▶ Capacity Data
 - ▶ Alternatives Considered
 - ▶ Pedestrian Improvements
 - ▶ Displays and Conceptual Improvements
- ▶ Obtain input on:
 - ▶ Concerns and Issues



Previous Plans, Studies, and Projects Considered

- ▶ Past public involvement meetings from March 24, 2015 and April 28, 2015
- ▶ Joseph E. Lowery Blvd. Transportation Corridor Study
- ▶ MLK Jr. Drive / Fairfield Place Curve Improvement Project
- ▶ Landscaping Plans at I-285 and MLK Jr. Blvd.
- ▶ Lena Street Multi-Use Path Phase II (Path.org)
- ▶ Joseph E. Boone Blvd. Projects (Dept of Watershed and Renew Atlanta)
- ▶ MLK Jr. Drive Complete Streets (COA DPW)

Note: Designated bike route for JEL will be rerouted to James P. Brawley Dr. NW and the Beltline.

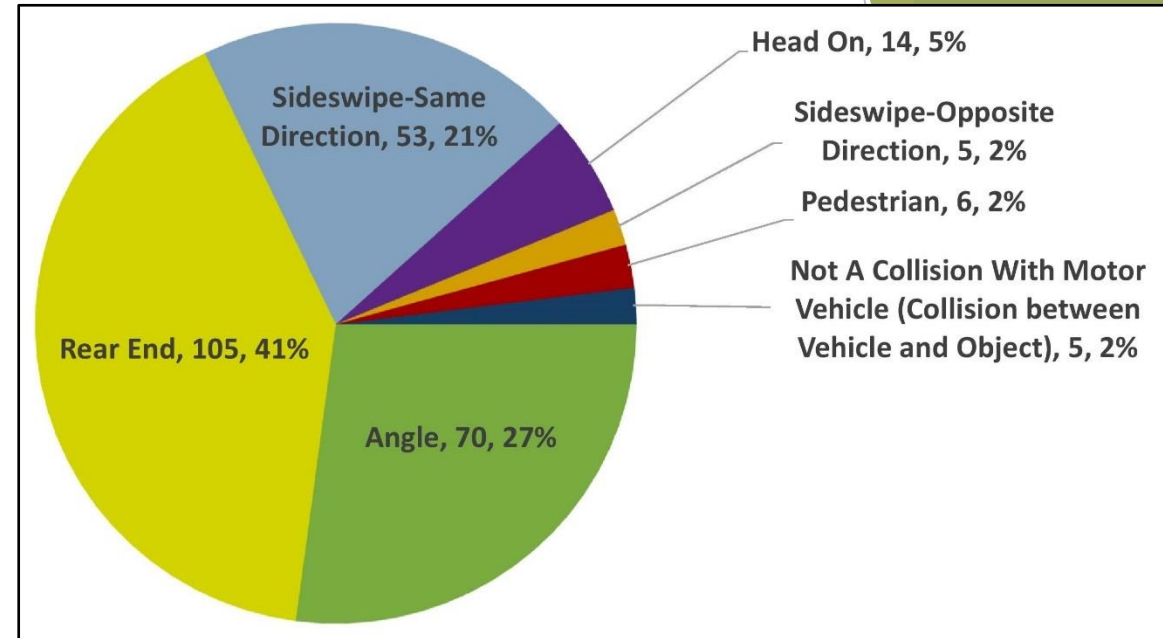
Project Need and Purpose

- ▶ Improve Vehicle Safety
- ▶ Improve Pedestrian Safety
- ▶ Improve Traffic Flow



Crash Data

- ▶ 105 Rear End Crashes
- ▶ 70 Angle Crashes
- ▶ 53 Sideswipe Crashes
- ▶ 6 Pedestrian Crashes
- ▶ 24 Other
- ▶ 258 Total Crashes*

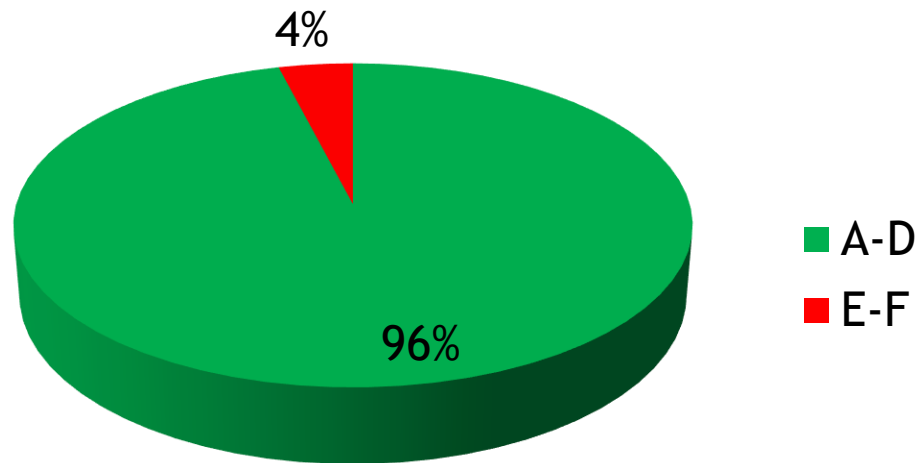


Year	Crash Type							Total Crashes
	Angle	Rear End	Sideswipe-Same Direction	Head On	Sideswipe-Opposite Direction	Pedestrian	Not a Collision with Motor Vehicle	
2013	23	29	17	3	1	3	1	77
2014	24	39	22	2	1	0	1	89
2015	23	37	14	9	3	3	3	92
Total	70	105	53	14	5	6	5	258
Percentage	27%	41%	21%	5%	2%	2%	2%	

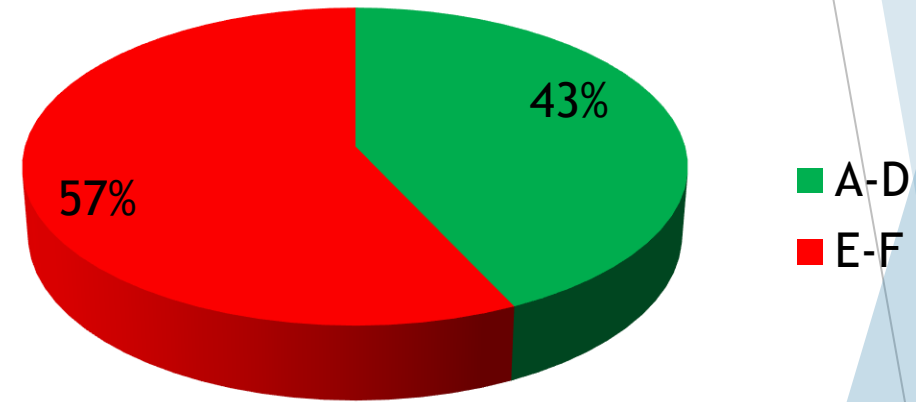
**Over 3 year period*

Capacity Data (Traffic Flow)

Level of Service 2018



Level of Service 2038



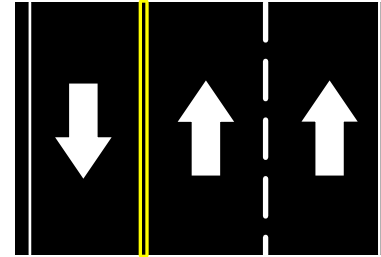
What happens if we do nothing?

- ▶ Average Daily Traffic
 - ▶ Existing (2018) - 18,300 vpd
 - ▶ Future (2038) - 28,200 vpd

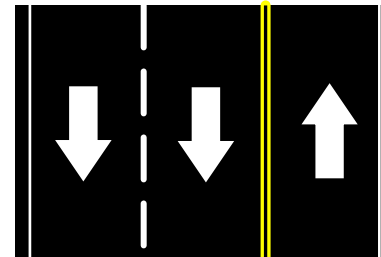
Alternatives Considered

Guiding Principles from City:

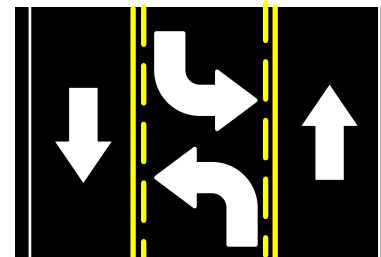
- ▶ Doing nothing is not acceptable.
- ▶ Widening that causes major impacts to residents and businesses is not acceptable.
- ▶ Must address safety issues.



- ▶ Two Lanes NB / One Lane SB



- ▶ Two Lanes SB / One Lane NB



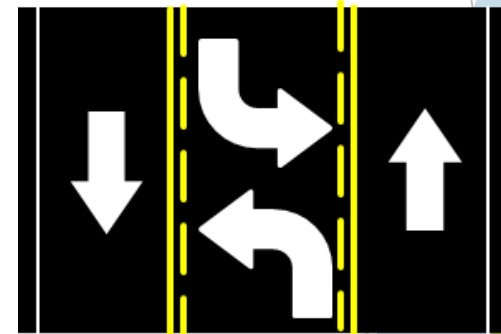
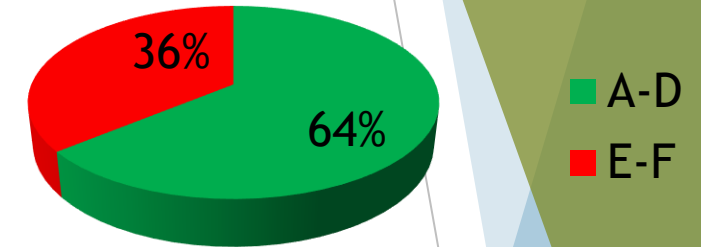
- ▶ Center Turn Lane with one Lane in each direction

Alternatives Considered

Results show:

- ▶ Center Turn Lane has better traffic flow and safety features, and therefore is the recommended alternative.

Alt. 3 Center Turn Lane



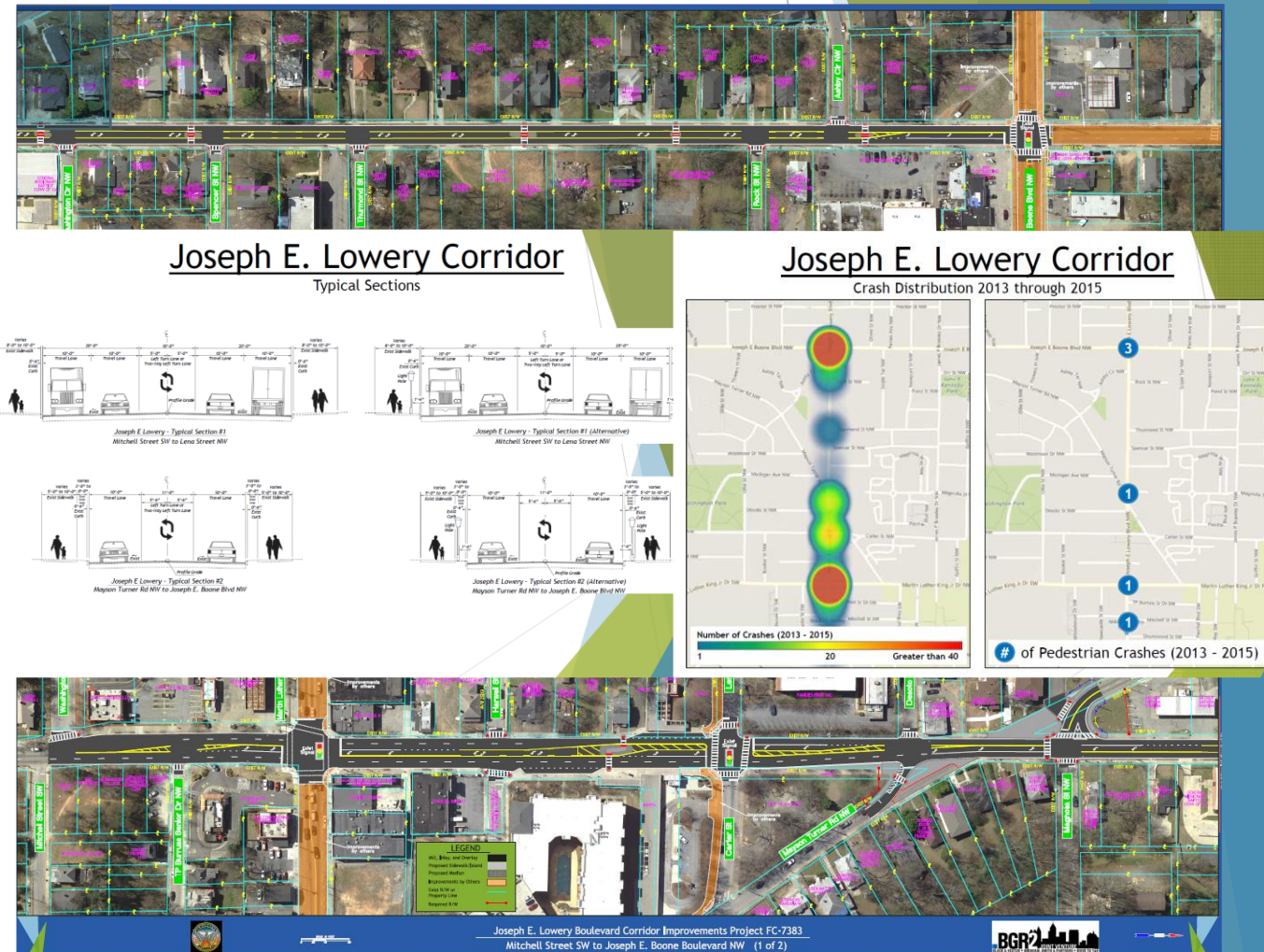
Pedestrian Improvements

- ▶ Sidewalk gaps connected
- ▶ Broken sidewalk repairs
- ▶ Pedestrian crossings at:
 - ▶ South of Lena Street / Carter Street
 - ▶ South of Booker Washington Drive
 - ▶ South of Spencer Street
 - ▶ North of Thurmond Drive
 - ▶ South of Rock Street
 - ▶ North of Ashby Circle



Displays and Conceptual Improvements

- ▶ Large format drawing on center table.
- ▶ Informational boards on both sides of the room.
- ▶ Incorporate recommendations from studies, observations, and feedback from City staff.
- ▶ At this time they are still conceptual. Feedback is welcomed and desired.



Project Funding

Renew Atlanta

- ▶ \$250 million infrastructure bond
- ▶ First step toward resolving an infrastructure backlog of more than \$900 million
- ▶ Approved by voters on March 17, 2015
- ▶ Over 80% of voters approved

www.renewatlantabond.com



Please Provide Your Input and Thank you for Attending!

- ▶ View Conceptual Layouts and Informational Boards
- ▶ Ask City of Atlanta Representatives your Questions
- ▶ Provide us with your Feedback
- ▶ Written Comments tonight or on-line through February 3rd

Please visit
www.renewatlantabond.com for:

- ▶ Presentation materials from tonight's meeting
- ▶ To view replies to comments regarding this project
- ▶ To stay current on this project and others