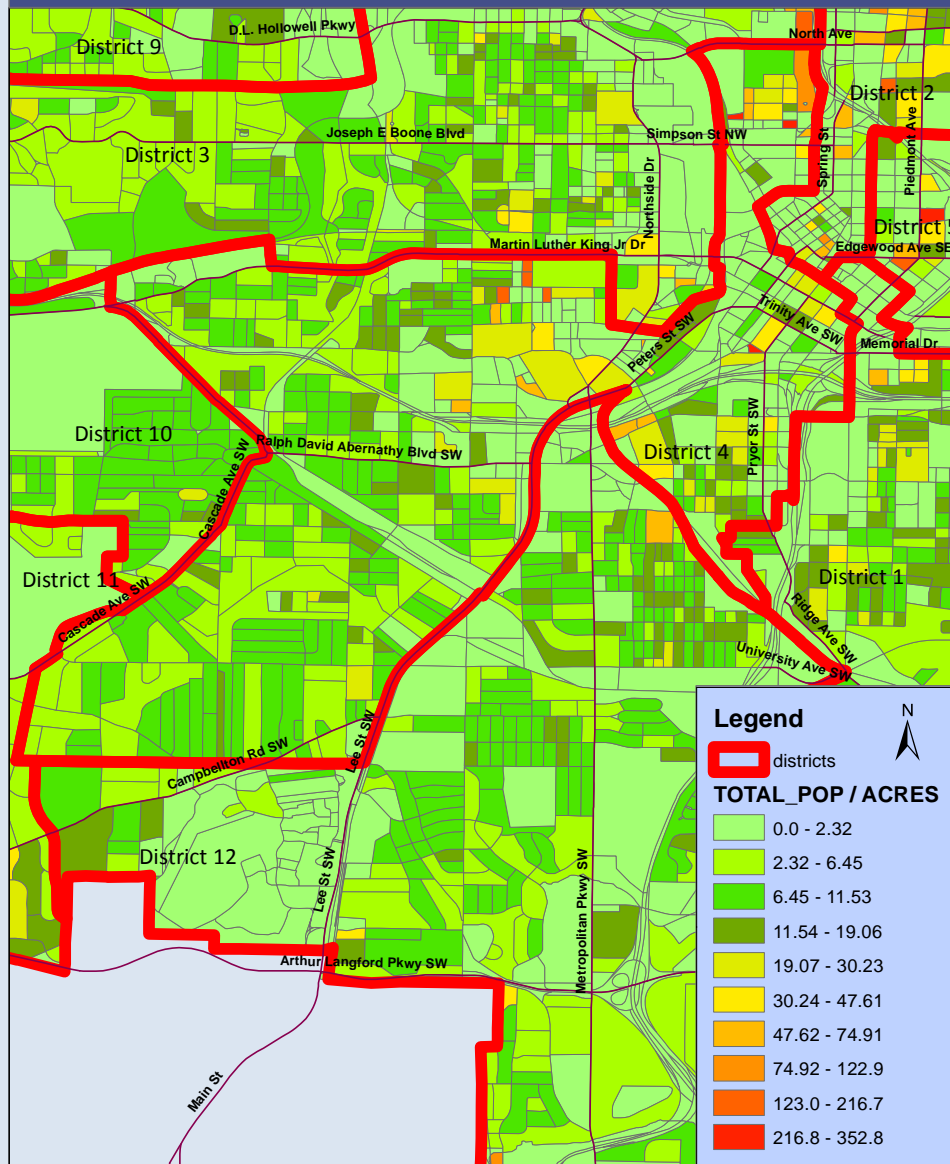




City of Atlanta Council District 4: 2010 Population Density

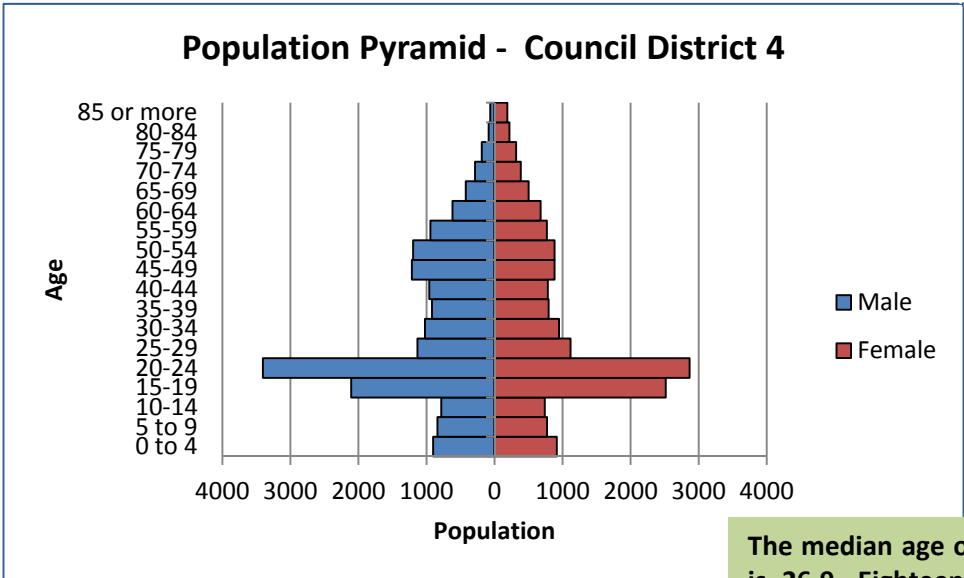


CITY OF ATLANTA – Council District 4 - 2010 POPULATION

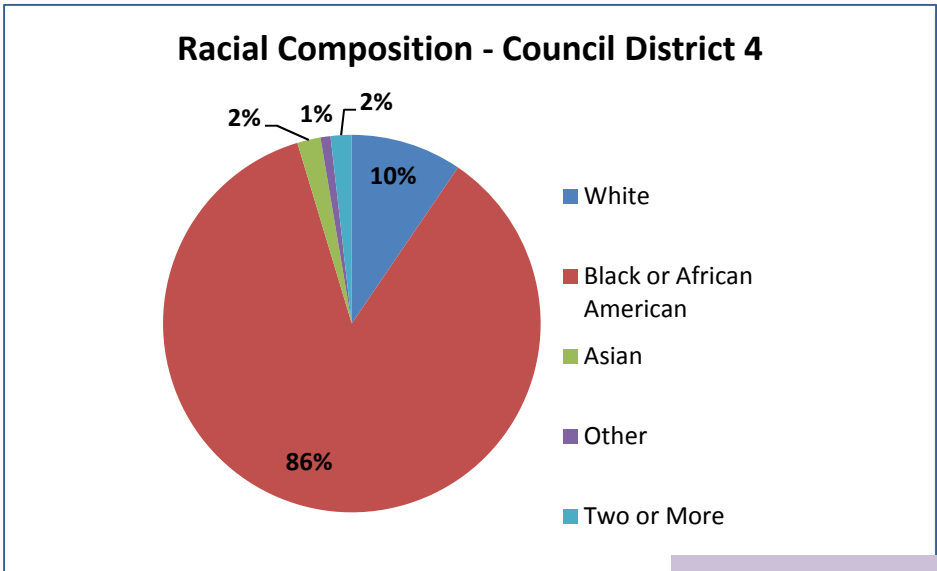
According to the 2010 U.S. Census, the population of the City of Atlanta Council District 4 is 33,359.

The Map shows the population density (persons per acre) of each Census Block in District 4. District 4 has an overall density of 8.3 persons per acre.

City of Atlanta 2010 Census Summary



The median age of the population is 26.9. Eighteen percent of the population is under 18, 8% of the population is over 65 and 36.5% of the population is between 20 and 39 years old.

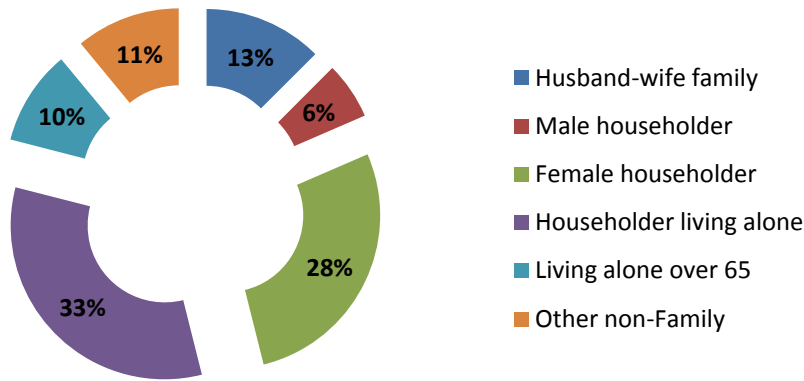


Eighty-six percent of the population is African American, 10% is White, 2% is Asian, 1% is Other (Native American, Pacific Islander and other) and 2% are two or more races. Two and a half percent of the population is of Hispanic or Latin Origin.



HOUSEHOLDS

Household Composition- Council District 4

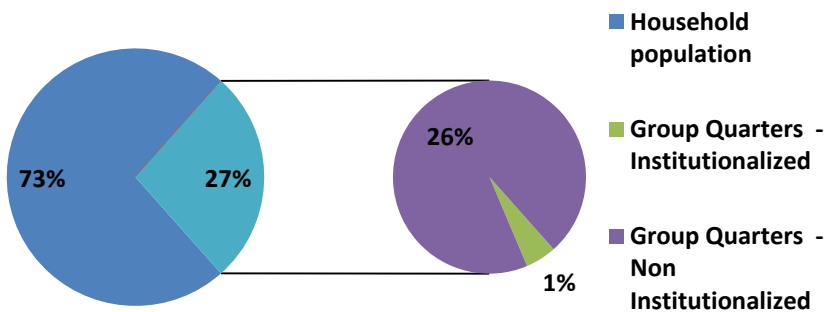


There are 24,416 District 4 residents in 10,838 households. Of these, 46% are family households and 54% are non-family households. Of all households, 26% have children under age 18 and 21% have an individual 65 years and older.

Forty-three percent of households are single person households, 28% are female headed households and 13% are husband and wife households.

The average household size is 2.2 persons per household and the average family size is 3.2 persons per family.

Household and Group Quarter Population - Council District 4



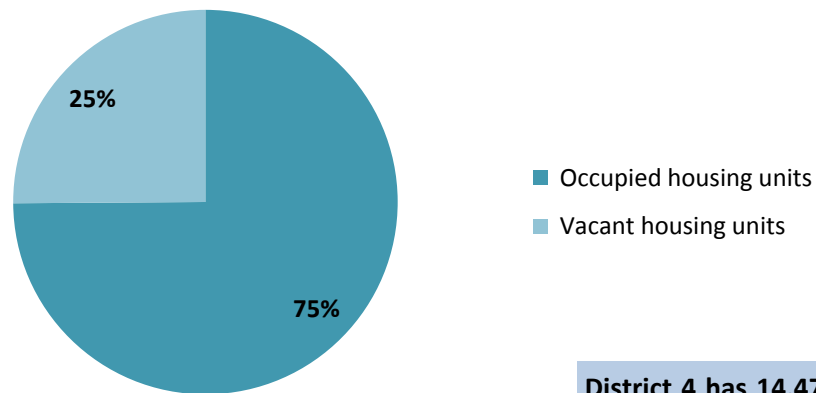
Most of the District 4 population (73%) lives in households while 27% (8,943) live in Group Quarters.

Most of the Group Quarter population lives in Non-Institutionalized Group Quarters, mainly college and university housing.



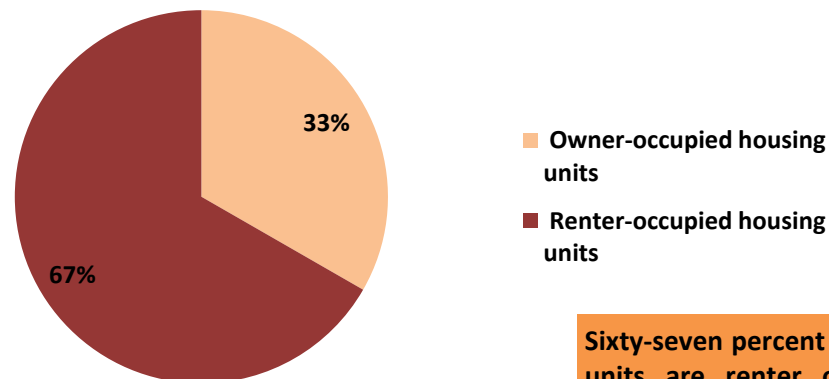
HOUSING

Housing Occupancy- Council District 4



District 4 has 14,476 housing units. 75% are occupied and 25% are vacant. Rental units have 16% vacancy rate while owner occupied units have a 9% vacancy rate.

Housing Tenure- Council District 4



Sixty-seven percent of the occupied housing units are renter occupied and 33% are owner occupied. Renter occupied units have a larger household size (2.32) than owner occupied units (2.13).