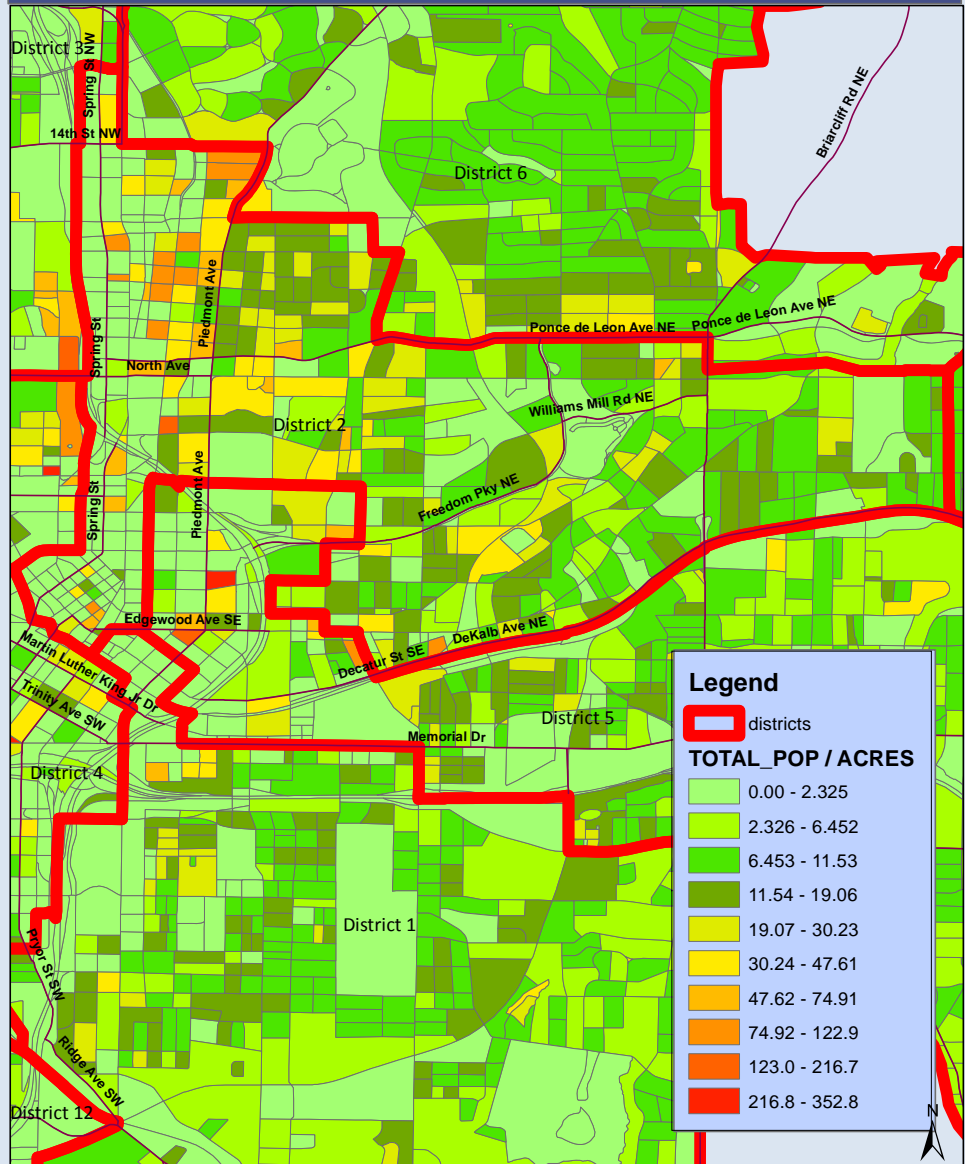




City of Atlanta Council District 2: 2010 Population Density

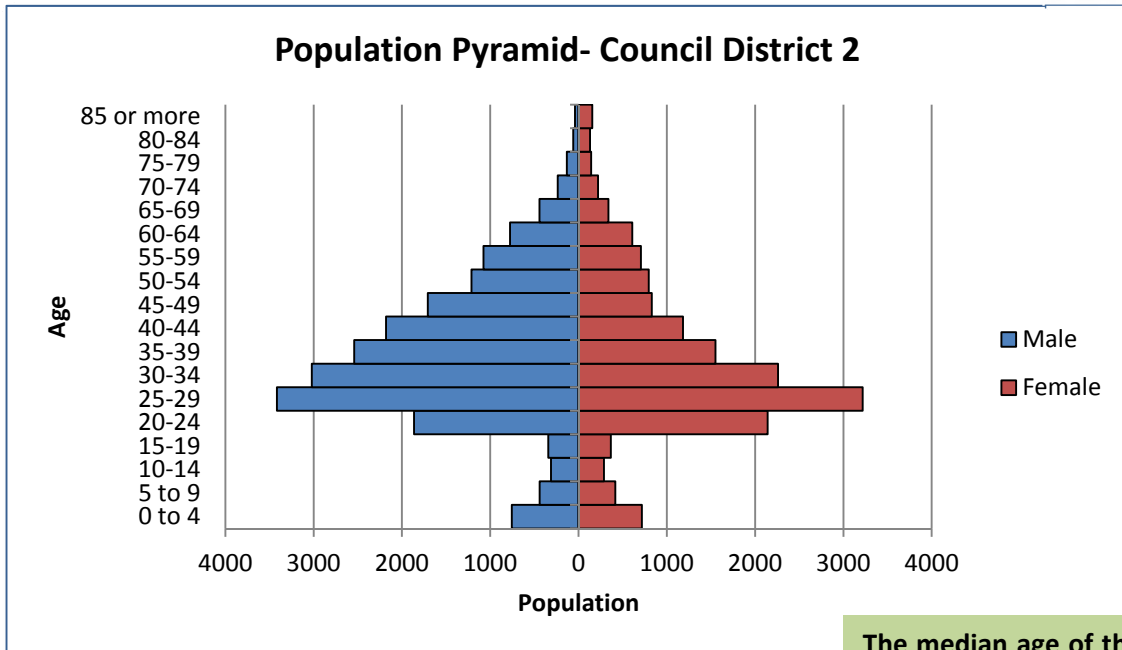


CITY OF ATLANTA – Council District 2 - 2010 POPULATION

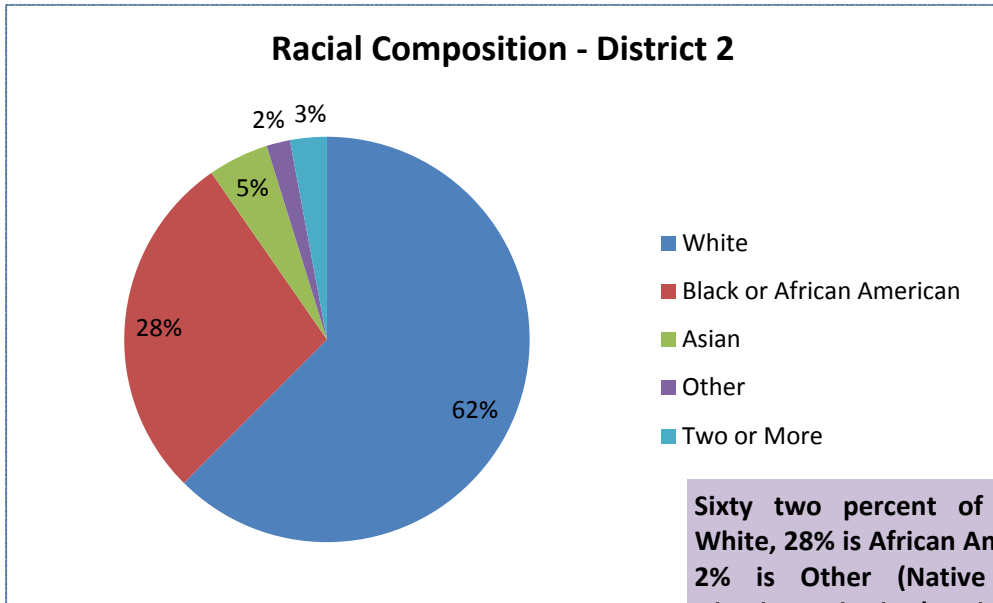
According to the 2010 U.S. Census, the population for the City of Atlanta Council District 2 is 36,626.

The Map shows the population density (persons per acre) of each Census Block in District 2. District 2 has an overall density of 13 persons per acre.

City of Atlanta 2010 Census Summary



The median age of the population is 33.8. Nine percent of the population is under 18, 5% of the population is over 65 and 55% of the population is between 20 and 39 years old.

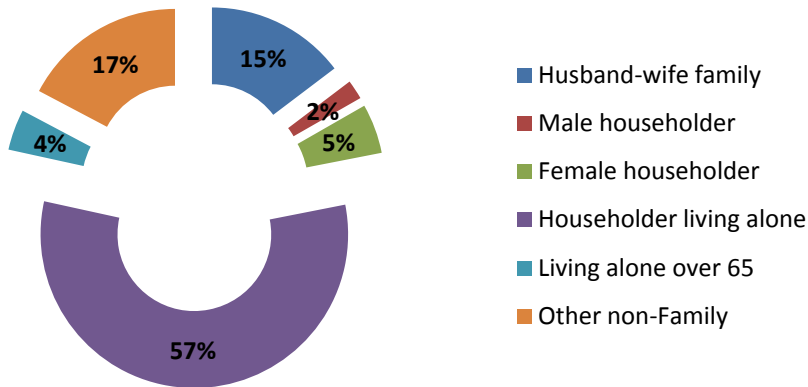


Sixty two percent of the population is White, 28% is African American, 5% is Asian, 2% is Other (Native American, Pacific Islander and other) and 3% are two or more races. Five percent of the population is of Hispanic or Latin Origin.



HOUSEHOLDS

Household Composition - Council District 2

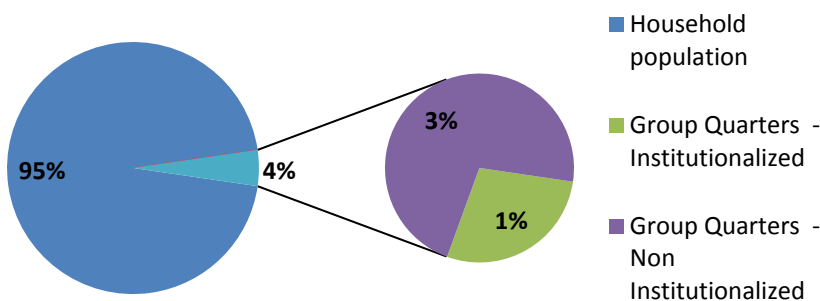


There are 34,953 District 2 residents in 22,405 households. Of these, 22% are family households and 78% are non-family households. Of all households, 9% have children under age 18 and 7% have an individual 65 years and older.

Sixty-one percent of households are single person households, 5% are female headed households and 15% are husband and wife households.

The average household size is 1.56 persons per household and the average family size is 2.56 persons per family.

Household and Group Quarter Population - District 2



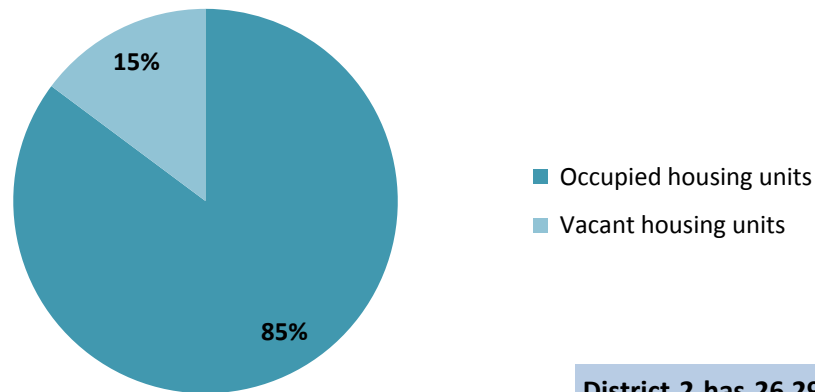
Most of the District 2 population (95%) lives in households while 5% (1,673) live in Group Quarters.

Most of the Group Quarter population lives in Non-Institutionalized Group Quarters.



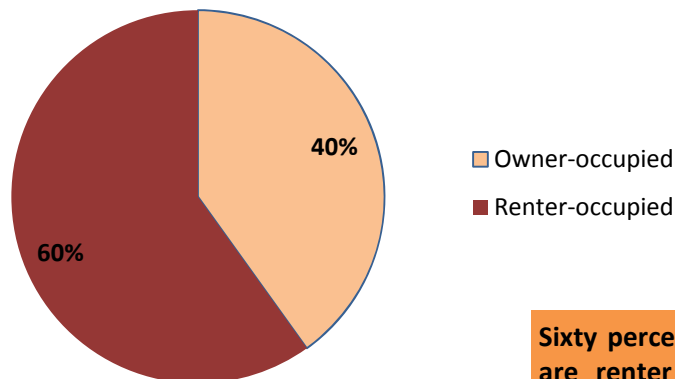
HOUSING

Housing Occupancy - District 2



District 2 has 26,292 housing units. 85% are occupied and 15% are vacant. Renter occupied units have a 10% vacancy rate about the same as the owner occupied vacancy rate of 11%.

Housing Tenure - District 2



Sixty percent of the occupied housing units are renter occupied and 40% are owner occupied. Renter occupied units have a smaller household size (1.5) than owner occupied units (1.7).