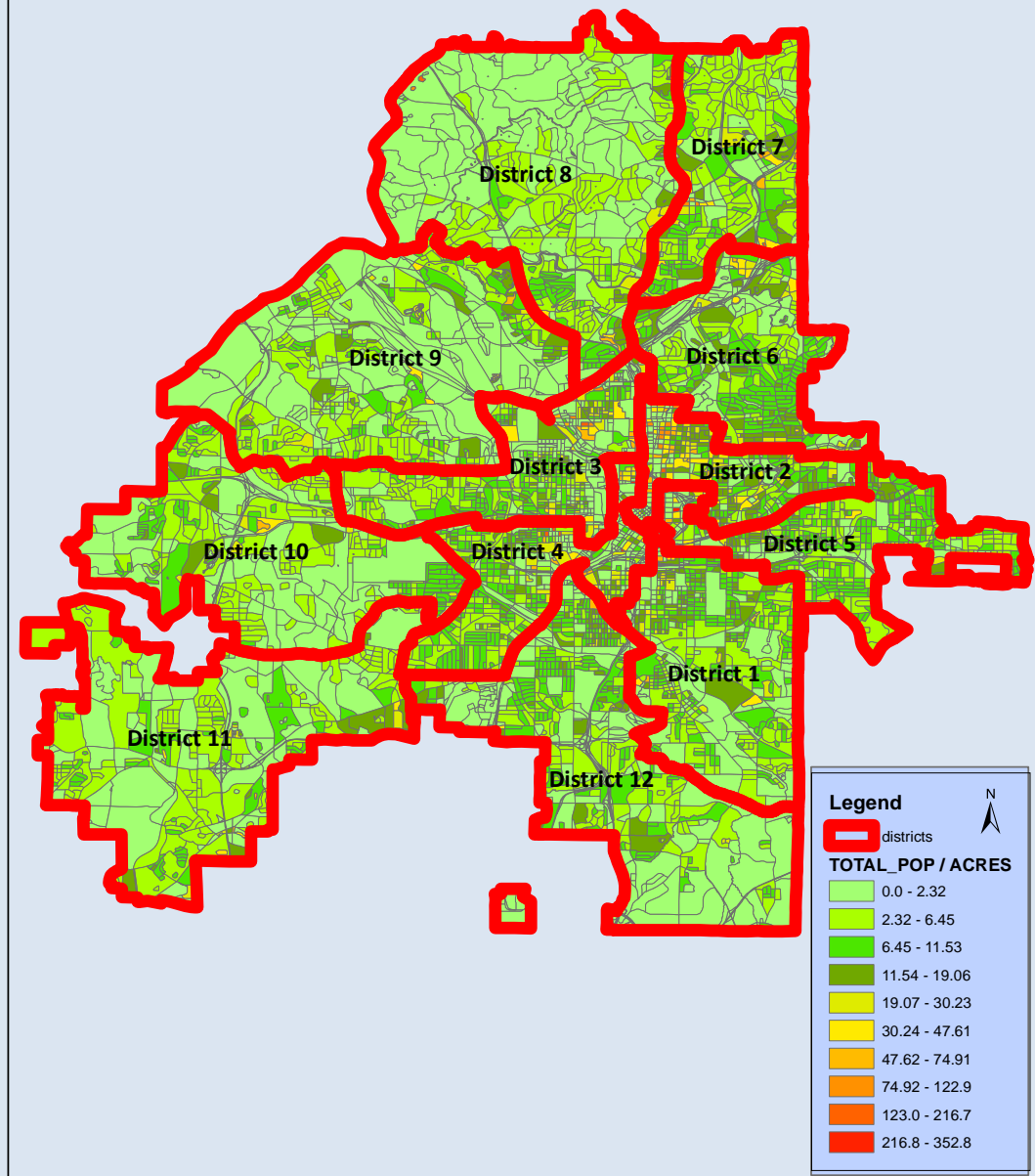




City of Atlanta 2010 Population Density



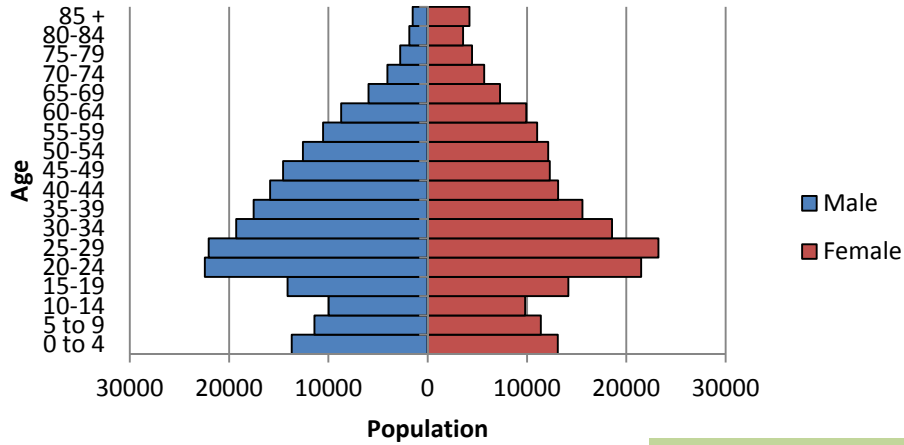
CITY OF ATLANTA – 2010 POPULATION

According to the 2010 U.S. Census, the population for the City of Atlanta is 420,003. The Map shows the population density (persons per acre) of each Census Block. The City of Atlanta has an overall density of 4.9 persons per acre.

City of Atlanta 2010 Census Summary

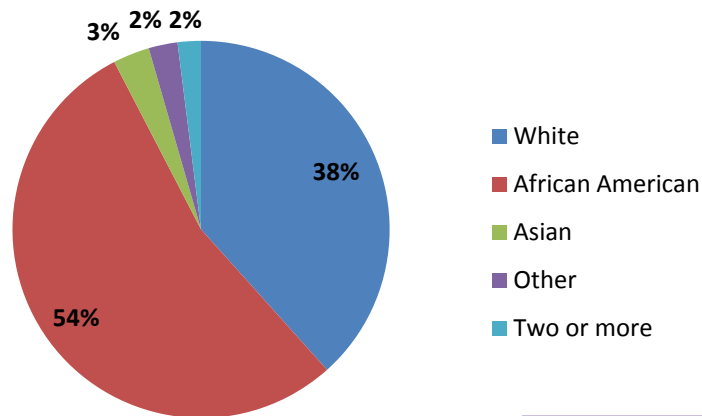


Population Pyramid - City of Atlanta



The median age of the population is 32.9. Nineteen percent of the population is under 18, 10% of the population is over 65 and 38% of the population is between 20 and 39 years old.

Racial Composition - 2010 City of Atlanta

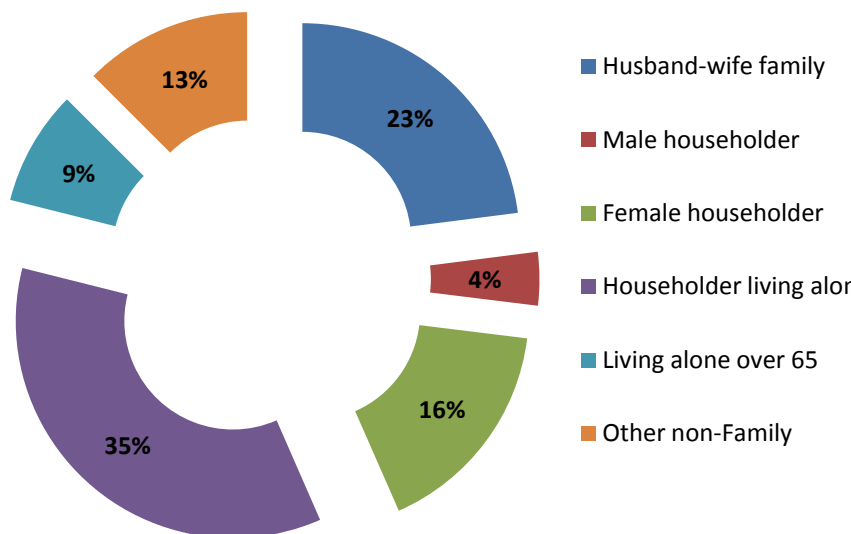


Fifty-four percent of the population is African American, 38% is White, 3% is Asian, 2.5% is Other (Native American, Pacific Islander and Other) and 2% are two or more races. Five percent of the population is of Hispanic or Latin Origin.



HOUSEHOLDS

Household Composition - City of Atlanta

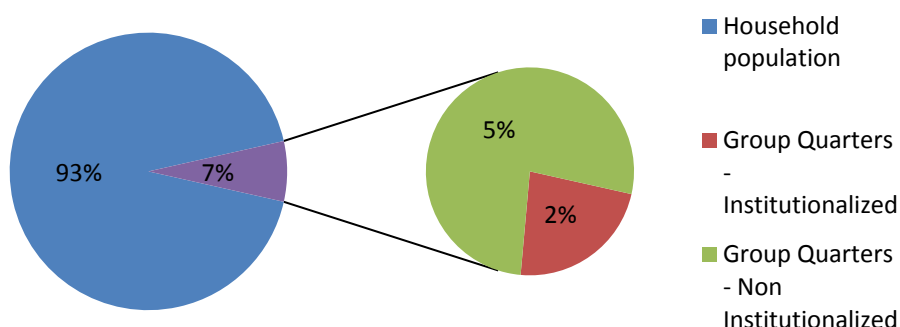


390,519 City of Atlanta residents live in 185,142 households. Of these, 43% are family households and 57% are non-family households. Of all households, 23% have children under age 18 and 18% have an individual 65 years and older.

Forty-four percent of households are single person households, 16% are female headed households and 23% are husband and wife households.

The average household size is 2.11 persons per household and the average family size is 3.06 persons per family.

Household and Group Quarters Population



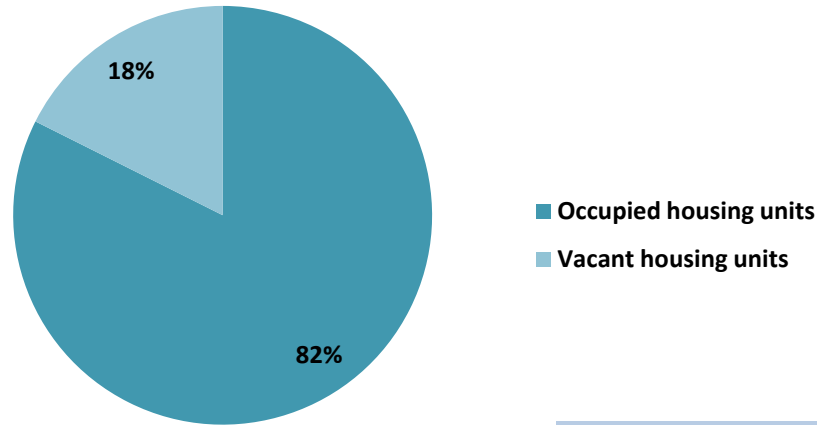
Most of the City of Atlanta population (93%) lives in households while 7% or 29,484 are in group quarters.

Almost 60% of the group quarter population lives in student housing (non-institutionalized group quarters). Correctional facilities are the largest institutionalized group quarters, representing 17% of the group quarters population.



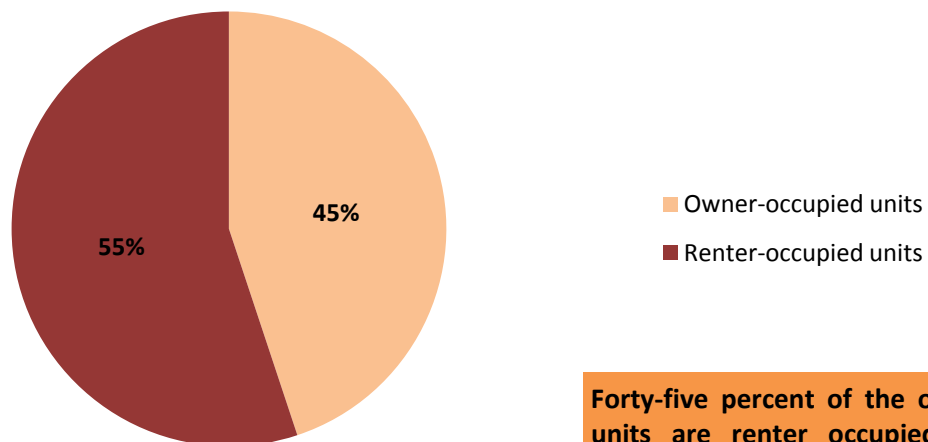
HOUSING

Housing Occupancy - City of Atlanta



The City of Atlanta has 224,573 housing units. 82% are occupied and 18% are vacant. Rental units have 15% vacancy rate while owner occupied units have a 7% vacancy rate.

Housing Tenure - City of Atlanta



Forty-five percent of the occupied housing units are renter occupied and 55% are owner occupied. Owner occupied units have a larger household size (2.18) than owner occupied (2.05).