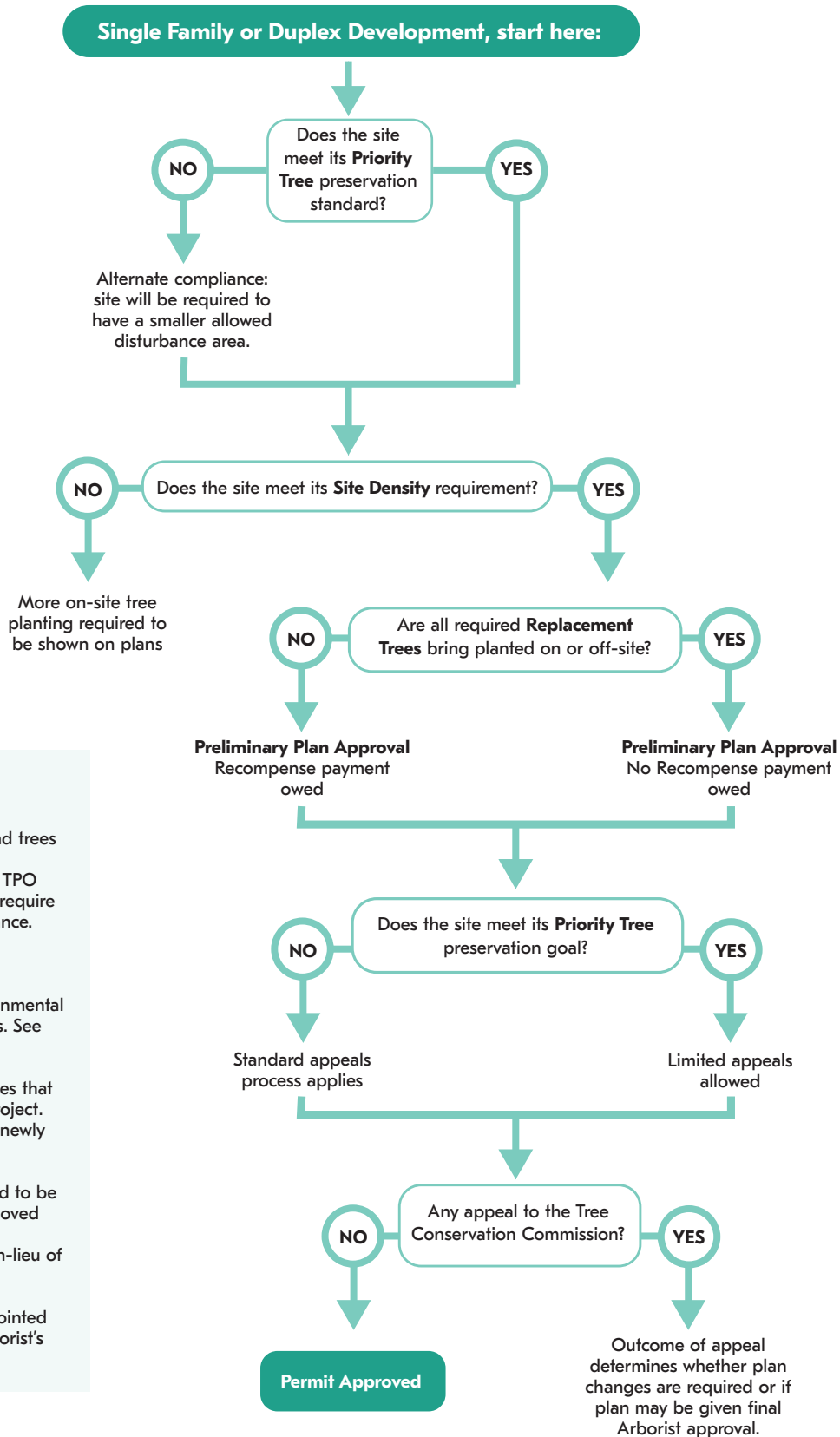


ATLANTA'S TREE PROTECTION ORDINANCE

PROPOSED PROCESS FLOW: RESIDENTIAL



NOTES:

Applications to include a tree survey identifying: Species, Priority Trees, and trees to be removed.

Major review points of the proposed TPO are shown here. Permit approval will require compliance with all aspects of ordinance.

TERMS IN FLOWCHART:

Priority Tree: Tree with highest environmental value determined by size and species. See fact sheet.

Site Density: Minimum number of trees that must be growing on site at end of project. Combination of preserved trees and newly planted ones.

Replacement plantings: Trees required to be planted as replacement for trees removed

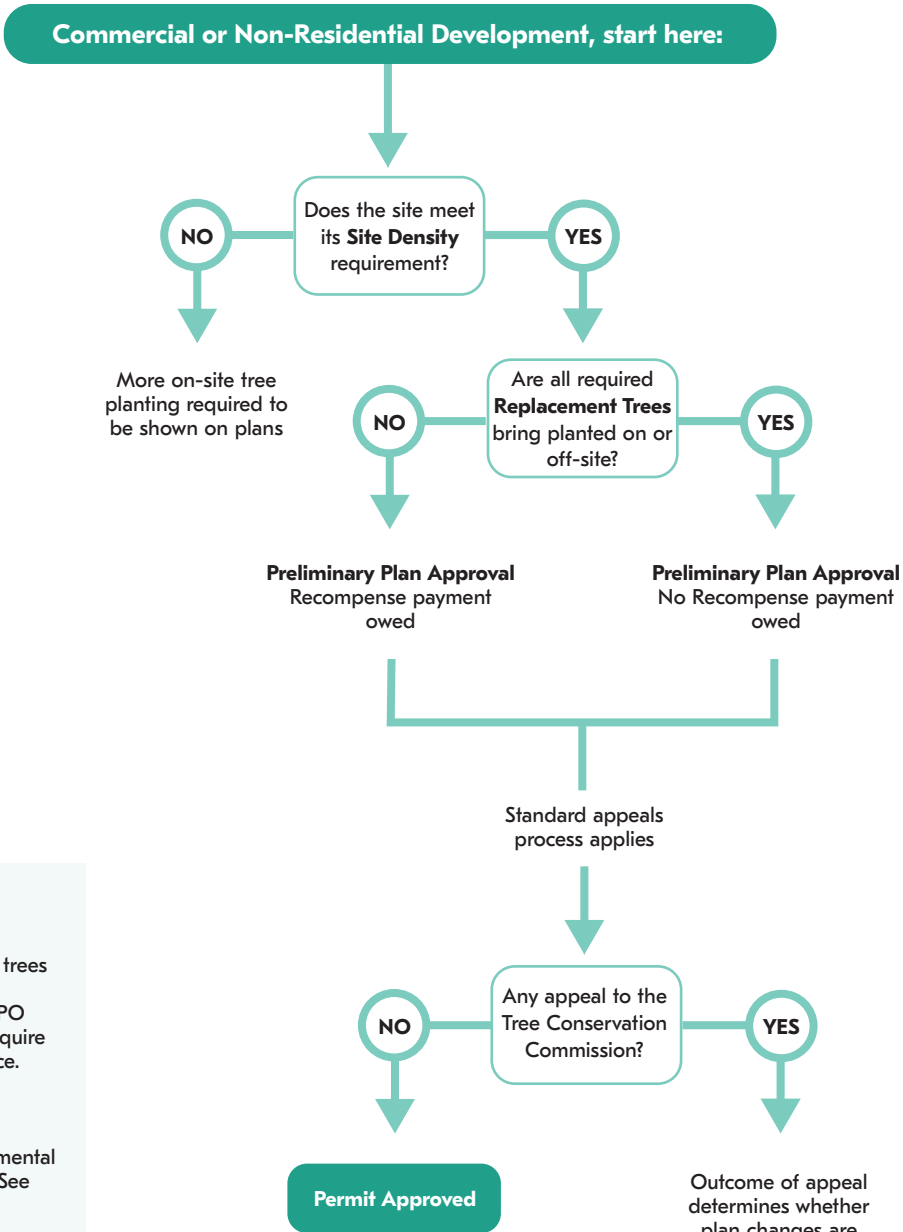
Recompense: Fee that may be paid in-lieu of planting all Replacement trees.

Tree Conservation Commission: Appointed board that hears appeals of City Arborist's decisions.



ATLANTA'S TREE PROTECTION ORDINANCE

PROPOSED PROCESS FLOW: COMMERCIAL/NON-RESIDENTIAL



NOTES:

Applications to include a tree survey identifying: Species, Priority Trees, and trees to be removed.

Major review points of the proposed TPO are shown here. Permit approval will require compliance with all aspects of ordinance.

TERMS IN FLOWCHART:

Priority Tree: Tree with highest environmental value determined by size and species. See fact sheet.

Site Density: Minimum number of trees that must be growing on site at end of project. Combination of preserved trees and newly planted ones.

Replacement plantings: Trees required to be planted as replacement for trees removed

Recompense: Fee that may be paid in-lieu of planting all Replacement trees.

Tree Conservation Commission: Appointed board that hears appeals of City Arborist's decisions.

